



GENERAL NOTES

- GENERAL NOTES AND LEGEND ON THIS SHEET REFER TO SHEETS 3.40 AND 3.45 ONLY.
- SEE THE STRUCTURAL, MECHANICAL, AND ELECTRICAL DRAWINGS FOR ADDITIONAL INFORMATION.
- SEE DIMENSION/REFERENCE PLANS FOR WALL CONSTRUCTION AND OTHER MECHANICAL/ELECTRICAL COORDINATION ITEMS.
- FIRE PROTECTION NOT SHOWN, TO BE COORDINATED IN SHOP DRAWINGS.

REFLECTED CEILING LEGEND

- EXISTING ITEMS TO REMAIN, SEE OTHER SHEETS FOR SALVAGED/RELOCATED ITEMS
- EXISTING LEVEL 1 FINISH 5/8" NON-SAG GYPSUM BOARD CEILING/SOFFIT/HEADER, PROVIDE A SMOOTH LEVEL 5 FINISH AND PAINT - SEE FINISH PLANS
- 5/8" NON-SAG GYPSUM BOARD CEILING/SOFFIT/HEADER, PAINT - SEE FINISH PLANS
- EXISTING TIN CEILING SOFFIT PANEL (TO REMAIN) AND PAINTED COLOR P2, SEE SHEET 4.10
- TIN CEILING SOFFIT PANEL TO BE INSTALLED FROM SALVAGED PANELS AND PAINTED COLOR P2, SEE SHEET 4.10
- NEW TIN CEILING SOFFIT PANEL (PROVIDED BY OWNER) TO BE INSTALLED AND PAINTED COLOR P2, SEE SHEET 4.10
- LIGHT FIXTURES, SEE ELECTRICAL DRAWINGS
- CEILING MOUNTED SPEAKER, SEE ELECTRICAL DRAWINGS
- EXIT/EGRESS COMBO DEVICES, SEE ELECTRICAL DRAWINGS
- EMERGENCY LIGHTING, SEE ELECTRICAL DRAWINGS
- SUPPLY AIR GRILLE, SEE MECHANICAL DRAWINGS
- RETURN AIR GRILLE, SEE MECHANICAL DRAWINGS
- EXHAUST GRILLE, SEE MECHANICAL DRAWINGS
- STRUT - INSTALL CEILING AT BOTTOM OF STRUCTURE ABOVE
- OPEN - OPEN TO STRUCTURE, NO FINISH, UNLESS NOTED OTHERWISE
- EXISTING 2' x 2' SQUARE TIN CEILING PANEL (TO REMAIN) TO BE PAINTED COLOR P1, SEE SHEET 4.10
- EXISTING 2' x 2' SQUARE TIN PANEL TO BE INSTALLED FROM SALVAGED PANELS ON 1x FURRING STRIPS AND PAINTED COLOR P1, SEE SHEET 4.10
- NEW 2' x 2' SQUARE TIN CEILING (PROVIDED BY OWNER), INSTALL ON 1x FURRING STRIPS AND PAINTED P1, SEE SHEET 4.10
- 4'-0" x 1'-6" TIN CEILING BRAID PANEL (TO REMAIN) TO BE PAINTED COLOR P1, SEE SHEET 4.10
- 4'-0" x 1'-6" TIN CEILING BRAID PANEL TO BE INSTALLED FROM SALVAGED PANELS ON 1x FURRING STRIPS AND PAINTED COLOR P1, SEE SHEET 4.10
- NEW 4'-0" x 1'-6" TIN CEILING BRAID PANEL (PROVIDED BY OWNER), INSTALL ON 1x FURRING STRIPS AND PAINTED COLOR P1, SEE SHEET 4.10

KEYNOTES

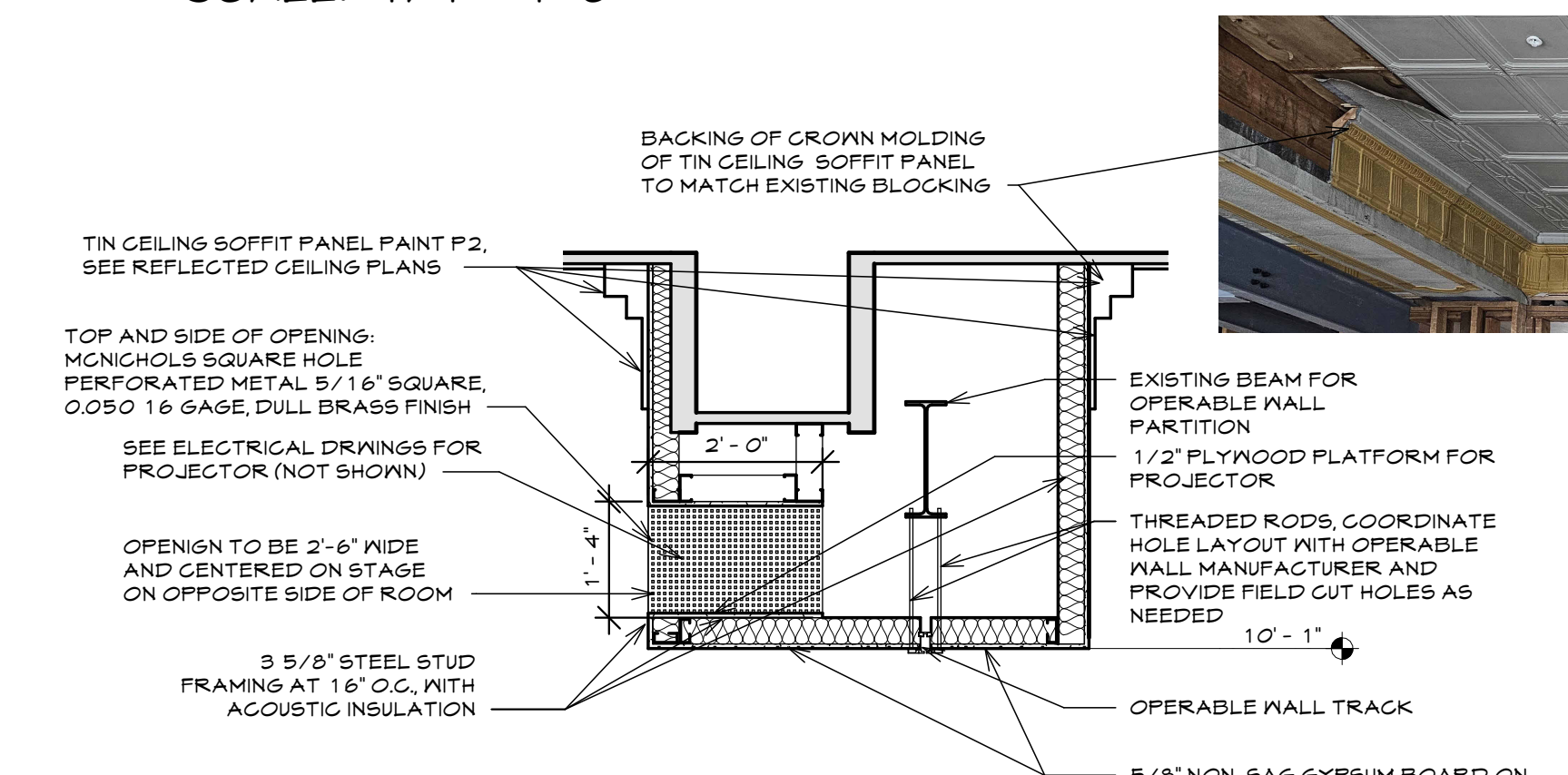
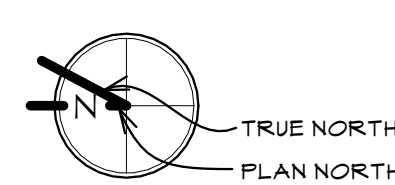
- DASHED LINES INDICATE UPPER CABINETS OR SHELVING BELOW
- PATCH HOLE IN DRYWALL CEILING AND ALIGN FINISH FACE TO EXISTING DRYWALL CEILING, VERIFY SIZE
- TOILET PARTITION BELOW
- LOCATION OF NEW AREA TO BE CUT IN EXISTING DRYWALL CEILING FOR ATTIC ACCESS LADDER AND ATTIC ACCESS HATCH: BILCO KD-2 (48" x 48")
- TIN CORNER PIECE PANEL (NOT PROVIDED BY OWNER, CONTRACTOR TO REPLICATE 4 CORNER PIECES FROM W.F. NORMAN CORP. www.wfnorman.com) TO BE PLACED IN CORNER OF CEILING, TRIM AS NEEDED, PAINT P2, SEE SHEET 4.10
- EXISTING TIN CORNER PIECE (SALVAGED) TO BE RELOCATED HERE, PAINT P2, SEE SHEET 4.10
- EXISTING GYPSUM BOARD ATTACHED TO ROOF TRUSS STRUCTURE ABOVE, PROVIDE A SMOOTH LEVEL 5 GYPSUM BOARD FINISH, ENTIRE ROOM
- ALIGN FINISH
- WRAP NEW STRUCTURAL BEAM WITH 5/8" GYPSUM BOARD
- PATCH DRYWALL AT NEW SUPPLY, EXHAUST, OR RETURN GRILLE INSTALLATION
- PAINT EXTERIOR SOFFIT, COLOR TO BE SELECTED
- INSTALL 1x FURRING @ 2'-0" O.C. FOR TIN CEILING INSTALLATION, ENTIRE ROOM
- INSTALL A HORIZONTAL "V" GROOVE DRYWALL EXPANSION JOINT

STAGE CURTAINS

ITEM	DESCRIPTION	MANUFACTURER/COLOR/STYLE/TYPE	WIDTH x HEIGHT	ROOM #	REMARKS
EQUIPMENT					
E1	BASE BID: MAIN STAGE CURTAINS (2 PIECES) WITH VALANCE (1 PIECE) / PIPE BATTEN	KM FABRICS PATTERN: CHARISMA, STYLE: 624, COLOR: PLUM 1076	MAIN STAGE: 4'-0" x 11'-6" MAIN VALANCE: 11'-6" x 2'-6"	204	CEILING MOUNTED WITH HH MODEL 4015B TRAVELER TRACK, BI-PART MANUAL ROPE OPERATION X 20'-0" LONG, PROVIDE AND INSTALLED BY GENERAL CONTRACTOR
E2	ALTERNATE #5: SIDE TABS (4 PIECES) / PIPE BATTEN	KM FABRICS PATTERN: CHARISMA, STYLE: 624, COLOR: PLUM 1076	SIDE TABS: 5'-0" x 11'-6"	204	CEILING MOUNTED (2 PIECES) WITH HH MODEL 4015B TRAVELER TRACK, BI-PART MANUAL ROPE OPERATION X 10'-0" LONG
E3	ALTERNATE #5: REAR TRAVELER (2 PIECES) WITH BORDER (1 PIECE) / PIPE BATTEN	KM FABRICS PATTERN: CHARISMA, STYLE: 624, COLOR: PLUM 1076	REAR TRAVELER: 8'-0" x 11'-6" BORDER: 16'-0" x 3'-6"	204	CEILING MOUNTED WITH HH MODEL 4015B TRAVELER TRACK, BI-PART MANUAL ROPE OPERATION X 16'-0" LONG

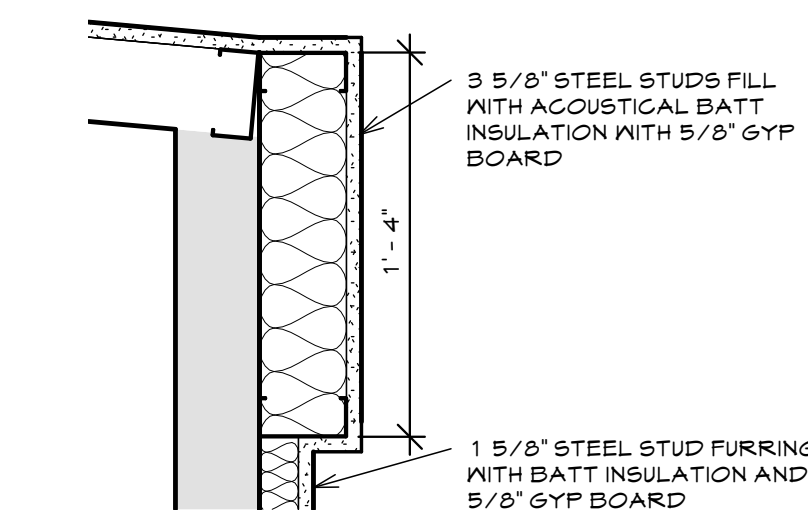
SECOND FLOOR REFLECTED CEILING PLAN

SCALE: 1/4" = 1'-0"



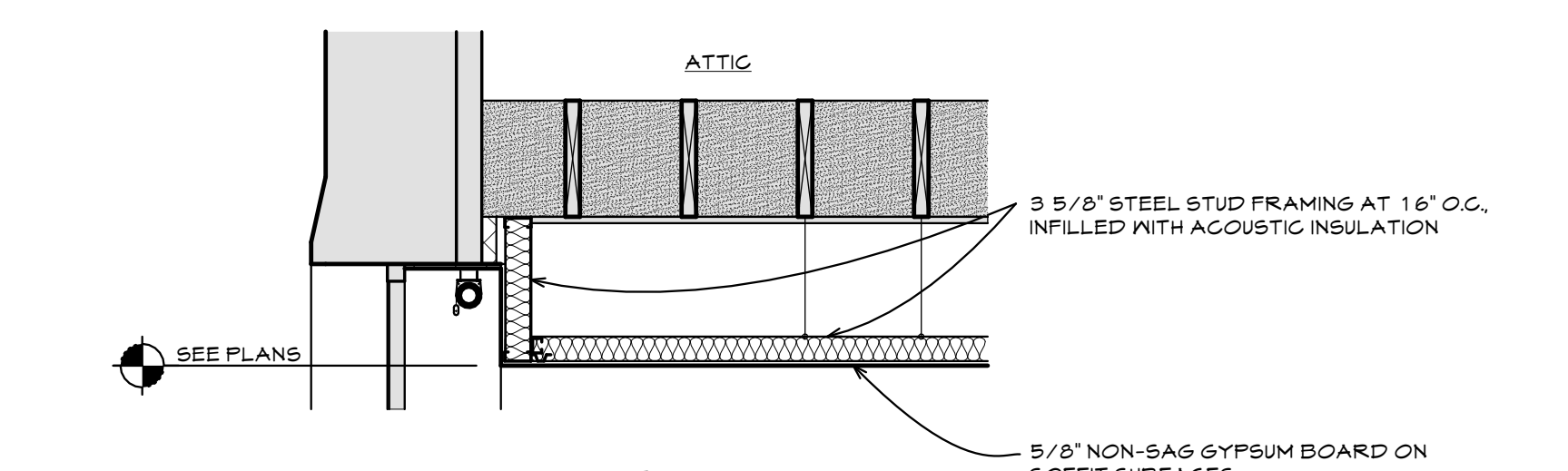
1 SOFFIT

SCALE: 1/2" = 1'-0"



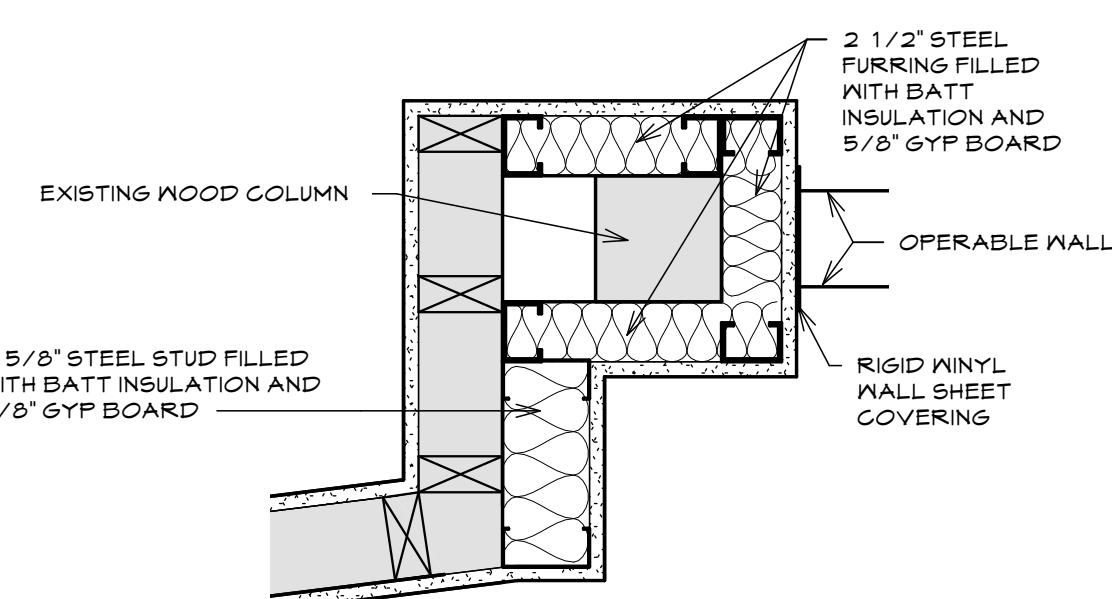
3 SURROUND

SCALE: 1 1/2" = 1'-0"



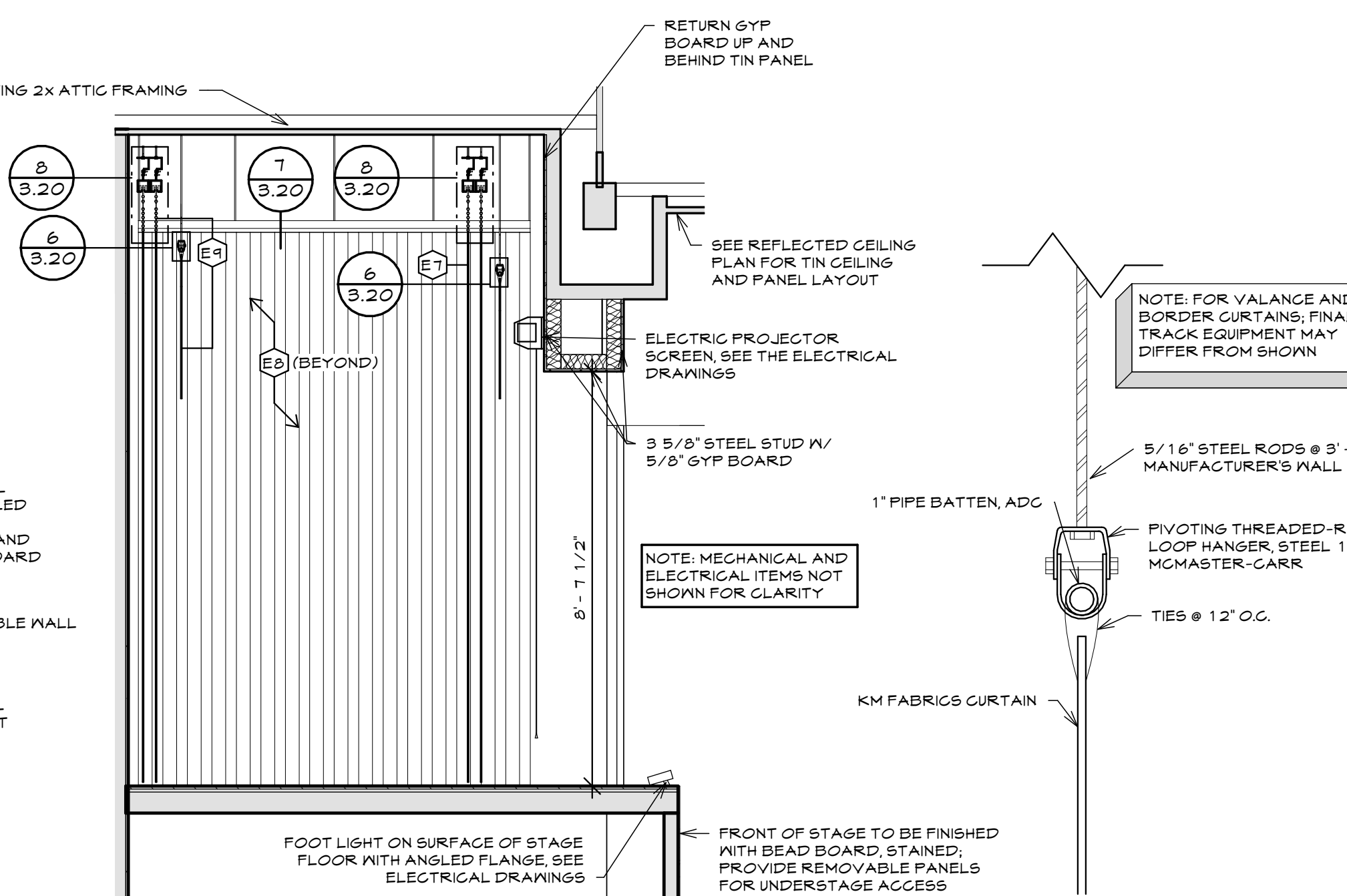
2 WINDOW WELL

SCALE: 1/2" = 1'-0"



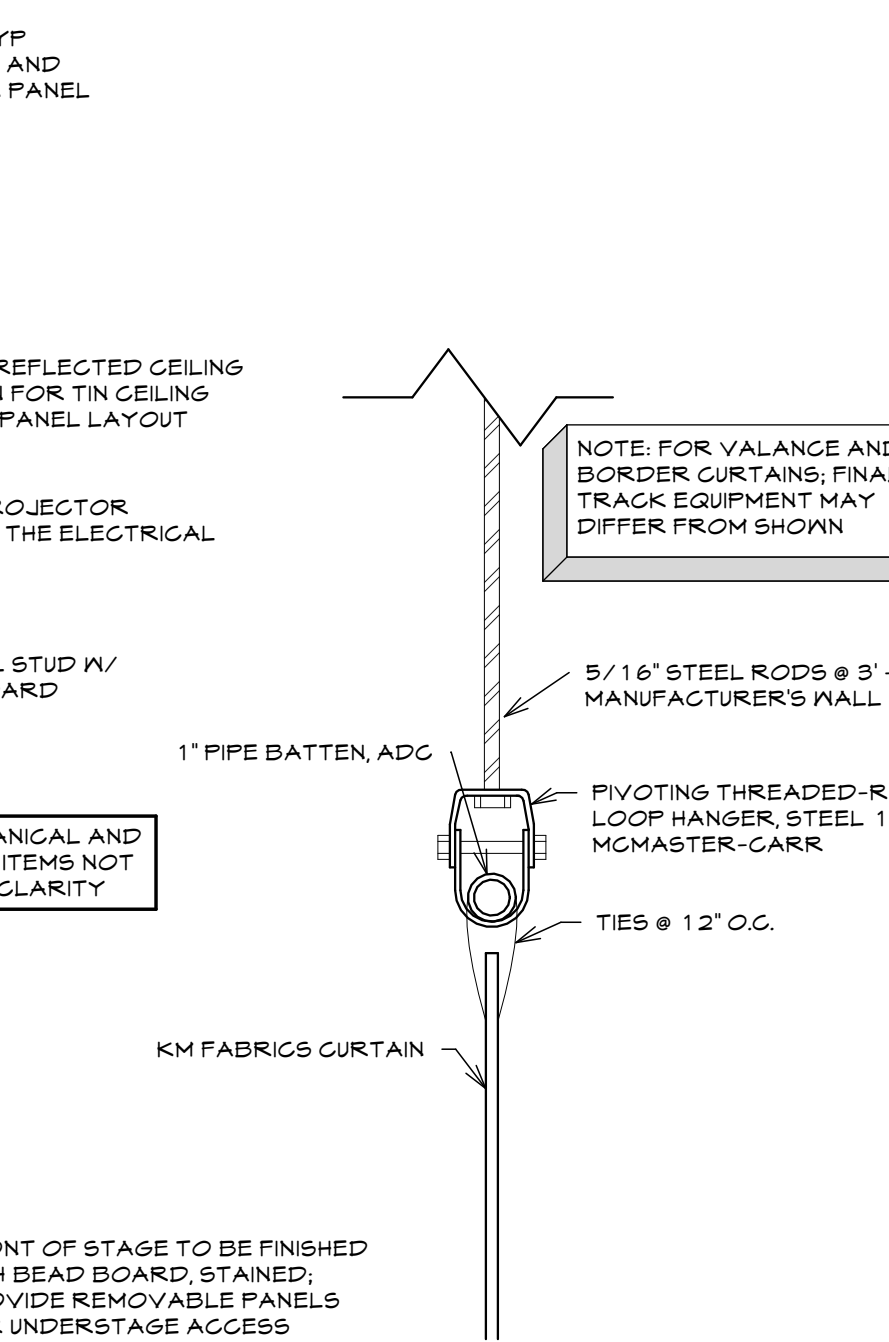
4 COLUMN FURRING

SCALE: 1 1/2" = 1'-0"



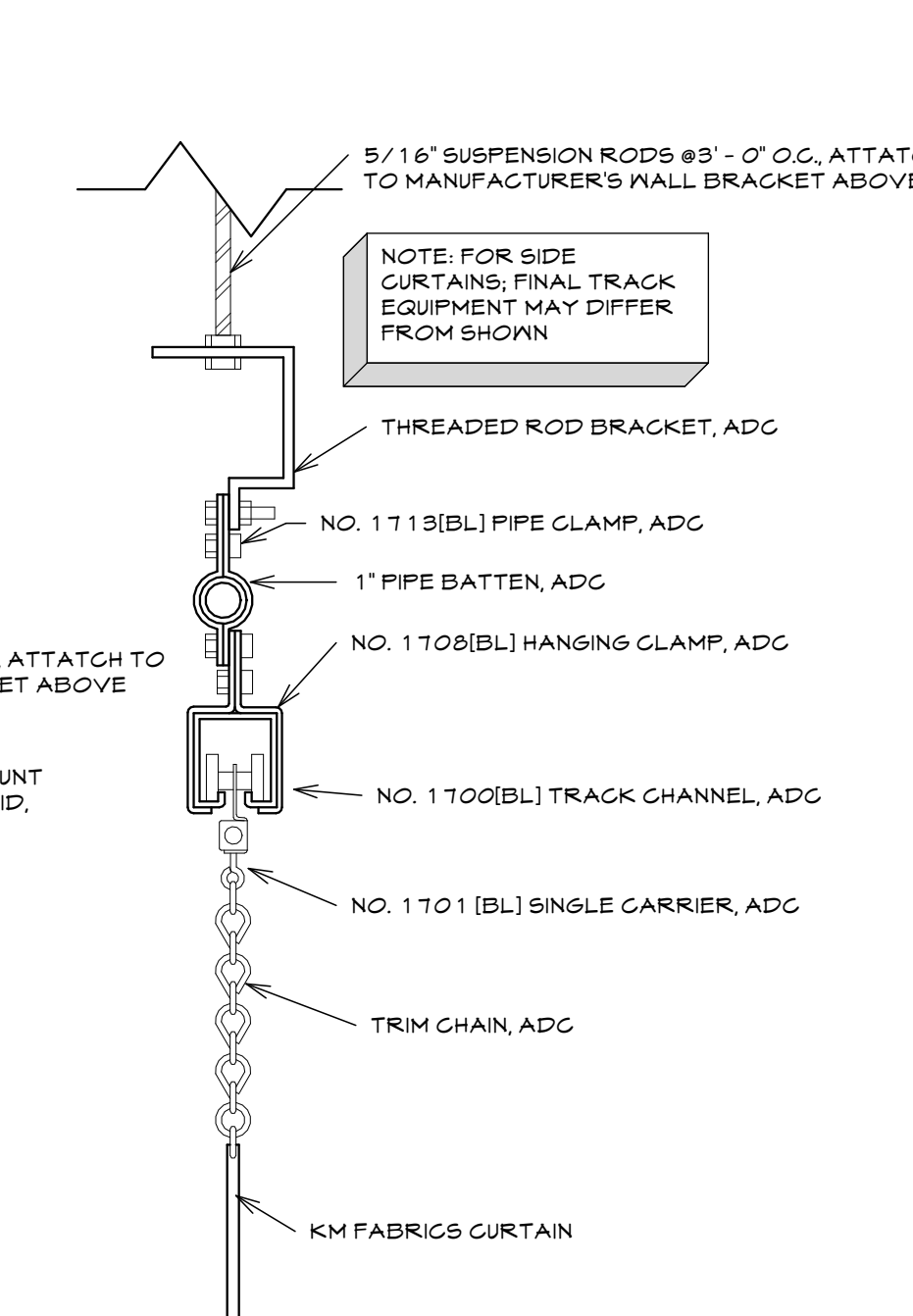
5 STAGE

SCALE: 3/8" = 1'-0"



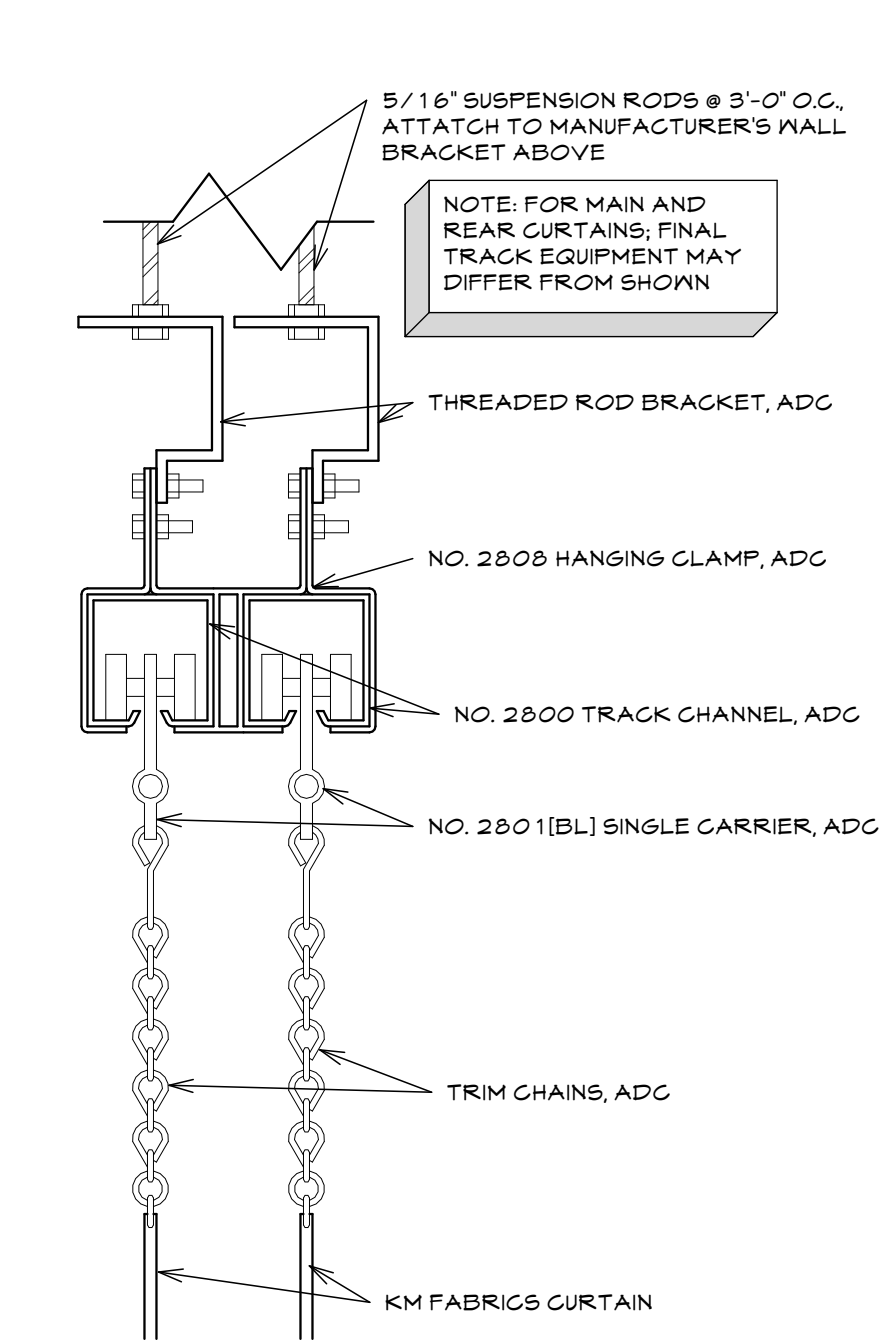
6 PIPE BATTEN

SCALE: 3" = 1'-0"



7 SINGLE TRACK

SCALE: 3" = 1'-0"



8 BI-PARTING TRACK

SCALE: 3" = 1'-0"

PROJECT NUMBER
16-022

DATE
06-30-25

DRAWN BY
CB

DISK ID.

SHEET TITLE
SECOND FLOOR
REFLECTED
CEILING PLAN

SHEET NUMBER

3.20